

# ERREQUADRO

*Research over Research*

Erre Quadro s.r.l. is a research-driven consulting company, specialized in the automatic analysis of technical texts. Its mission is to support enterprises in their needs for competitive and strategic intelligence, knowledge management, intellectual property valorisation, and competencies management. The company also provides public and private decision makers with valuable insights by mapping the innovation landscape and conducting technology foresight studies. Finally, it applies AI-based approaches to patent data in order to identify concepts and solutions useful for the new product development process.



Company name: ERREQUADRO S.R.L.

Location: PISA Via Ponte a Piglieri 8, 56121

Fiscal and VAT code: 01595320506

Established: Aprile 2001

Legal form: LIMITED LIABILITY COMPANY (LLC, SRL)

Internet site: <https://www.errequadrosrl.com/>

NACE Code: 62.02

Sector: INNOVATION SERVICES for PUBLIC ADMINISTRATION

Spinoff: Università di Pisa

PMI, Requirements for technological innovation: Qualified team and IP

Turnover  
Value  
**500 K – 1M**

Subscribe  
Capital  
**10 K**

**NO**  
Female, young  
or Foreign  
Predominance

# Defined Team & Qualified Team



Riccardo Apreda  
**Head of R&D**



Donata Gabelloni  
**Managing director**



Giacomo Tazzini  
**Head of business  
development**



Andrea Mazzoni  
**Junior Analyst**



Dario Brugnoli  
**Senior Analyst**



Giovanni De Santis  
**Chief Patent Analyst**



Tommaso Pavanello  
**Senior Analyst**



10-20 Employees



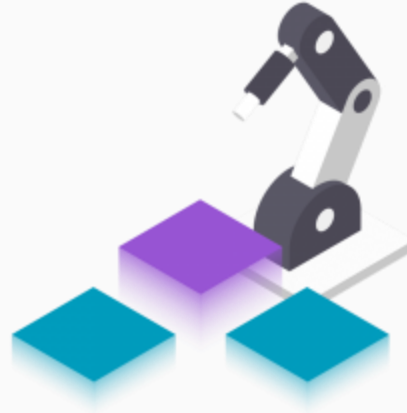
info@errequadrosrl.com  
errequadrosrl@pec.it

# SOLUTIONS FOR:



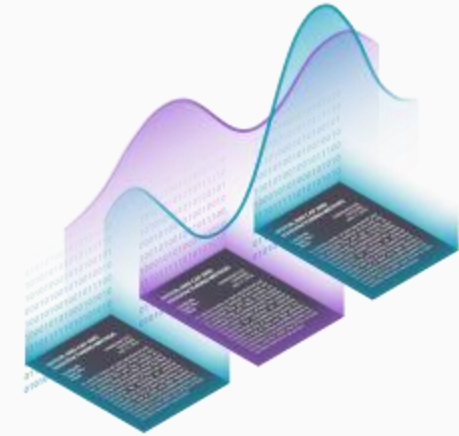
## PATENTS

The spinoff provides services in order to support its clients in IP Management, decision making processes and product development activities.



## INDUSTRY 4.0

It supports companies in their journey toward Industry 4.0



## DATA MINING

It proposes a brand-new RPA (**Robotic Process Automation**) approach, based on automatic text mining from company documents, in order to retrieve valuable information by means of NLP (**Natural Language Processing**) algorithms. Furthermore, retrieved information can be organized in knowledge structures tailored on customer's needs.

# INTERESTS, MARKET GEOGRAPHIC AREA OF INTEREST AND PATENTS

## INTERESTS

Customers	Lender / Investor	Partner university	Business partners	Technical support figures
<input checked="" type="checkbox"/>	<input type="checkbox"/>	<input type="checkbox"/>	<input checked="" type="checkbox"/>	<input type="checkbox"/>

## MARKET

### GEOGRAPHIC AREA OF INTEREST



#### Italy

EMILIA-ROMAGNA  
FRIULI-VENEZIA GIULIA  
LAZIO  
LIGURIA  
LOMBARDIA  
MARCHE  
PIEMONTE  
TOSCANA  
TRENTINO-ALTO ADIGE  
VALLE D'AOSTA  
VENETO



**Abroad**  
European Union

PATENT: IT, PCT, US, EP  
PATENT FILING NUMBER: PI2012A000074

PATENT: IT, PCT  
PATENT FILING NUMBER: PI2012A000030

UTILITY MODEL: IT  
PATENT FILING NUMBER: ITPI20090005

UTILITY MODEL: IT  
PATENT FILING NUMBER: ITPI20090006