

ERRE QUADRO

Research over Research

Erre Quadro s.r.l. is a research-driven service company, specialized in the automatic analysis of technical texts. Its mission is to support enterprises in their needs for competitive and strategic intelligence, knowledge management, intellectual property valorisation, and competencies management. The company also provides public and private decision makers with valuable insights by mapping the innovation landscape and conducting technology foresight studies. Finally, it applies AI-based approaches to patent data in order to identify concepts and solutions useful for the new product development process.



Company name: ERRE QUADRO S.R.L.

Location: PISA Largo Padre Renzo Spadoni, 56126

Fiscal and VAT code: 01595320506

Established: Aprile 2008

Legal form: LIMITED LIABILITY COMPANY (LLC, SRL)

Internet site: <https://www.errequadrosrl.com/>

NACE Code: 62.02

Sector: INNOVATION SERVICES for ENTERPRISES AND PUBLIC ADMINISTRATION

Spinoff: University of Pisa

PMI, Requirements for technological innovation: Qualified team and IP

Turnover
Value
500 K – 1M

Subscribed
Capital
10 K

NO
Female, young
or Foreign
Predominance

Defined Team & Qualified Team



Giacomo Tazzini
CEO



Giovanni De Santis
IP&Concept Leader



Dario Brugnoli
NLP Leader



Donata Gabelloni
R&D leader



Riccardo Apreda
Senior R&D Manager



Tommaso Pavanello
R&D Data Analyst



Monica Ibba
Officer



Filippo Chiarello
Researcher



10-20 Employees



info@errequadrosrl.com
errequadrosrl@pec.it

Defined Team & Qualified Team



Paolo Arduin
IT lead



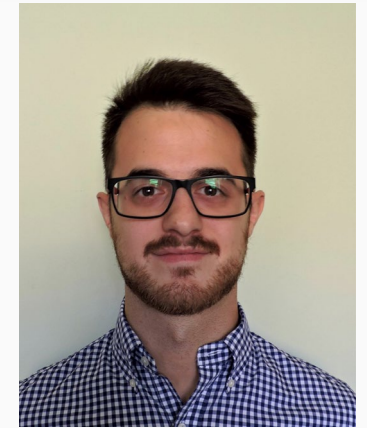
Andrea Mazzoni
Senior Data Analyst



Francesca Mattolini
Junior Data Analyst



Sara Pardelli
Junior Data Analyst



Giovanni Pianigiani
Junior Data Analyst



Simona Pira
14.0 consultant



Riccardo Campolmi
14.0 specialist



Antonietta Pagnozzi
Internship Data Analyst



10-20 Employees



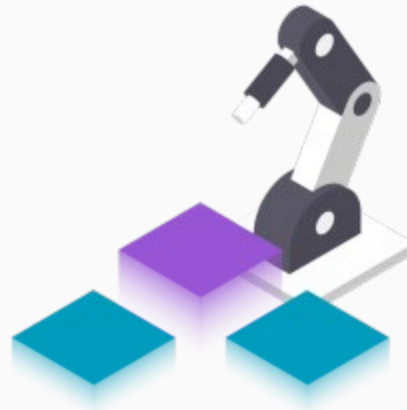
info@errequadrosrl.com
errequadrosrl@pec.it

SOLUTIONS FOR:



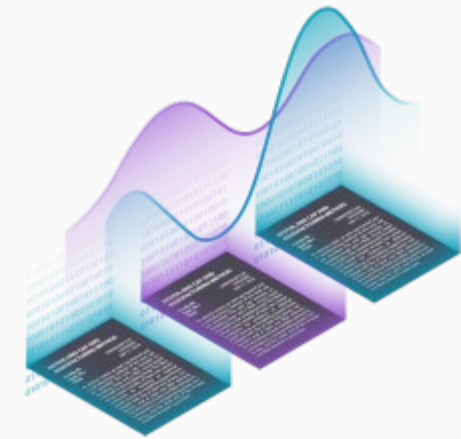
PATENTS

The spinoff provides services in order to support its clients in IP Management, decision making processes and product development activities.



INDUSTRY 4.0

It supports companies in their journey toward Industry 4.0



DATA MINING

It proposes a brand-new RPA (**Robotic Process Automation**) approach, based on automatic text mining from company documents, in order to retrieve valuable information by means of NLP (**Natural Language Processing**) algorithms. Furthermore, retrieved information can be organized in knowledge structures tailored on customer's needs.

INTERESTS, MARKET GEOGRAPHIC AREA OF INTEREST AND PATENTS

INTERESTS

Customers	Lender / Investor	Partner university	Business partners	Technical support figures
<input checked="" type="checkbox"/>	<input type="checkbox"/>	<input type="checkbox"/>	<input checked="" type="checkbox"/>	<input type="checkbox"/>

MARKET

GEOGRAPHIC AREA OF INTEREST



Italy

EMILIA-ROMAGNA
FRIULI-VENEZIA GIULIA
LAZIO
LIGURIA
LOMBARDIA
MARCHE
PIEMONTE
TOSCANA
TRENTINO-ALTO ADIGE
VALLE D'AOSTA
VENETO



Abroad
European Union

PATENT: IT, PCT, US, EP
PATENT FILING NUMBER: PI2012A000074

PATENT: IT, PCT
PATENT FILING NUMBER: PI2012A000030

UTILITY MODEL: IT
PATENT FILING NUMBER: ITPI20090005

UTILITY MODEL: IT
PATENT FILING NUMBER: ITPI20090006